



**REAL**

SWITCHGEARS & CABLES PVT. LTD.

COMPANY **PROFILE**

# ABOUT US

We are pleased to introduce ourselves as REAL SWITCHGEARS AND CABLES PRIVATE LIMITED (Established in 2000) - one of the Leading Authorised Dealer & Stockist and around Pune and Pimpri - Chinchwad.

We are representing Leading Industrial Electrical Manufactures and to name a few as mentioned below.

## **AUTHORIZED STOCKIEST OF -**

**L&T SWITCHGEARS, POLYCAB – CABLES & WIRES , ESBEE, GIC, SALZER - ALL PANEL ACCESSORIES, BRACO - LUGS AND GLANDS, NEWTEK ELECTRICALS - CURRENT TRANSFORMERS, OREVA - LED LIGHTINGS & TRINITY TOUCH – ENCLOSURES RELAY CARDS.**

REAL SWITCHGEARS principally competes on the basis of product quality and performance, reliability of supply, timely delivery, customer service and price. Established with sole objective to serve valuable customers with outstanding industrial electrical and electronic products.

We are having such wide range of electrical switchgears and cables with précised applications and guaranteed delivery within the mentioned tenures. For more information, kindly visit our website [www.realswitchgears.com](http://www.realswitchgears.com)



All icons and texts are Clickable.



## VISION

- Market products & services which will ensure customers satisfaction and appreciation.
- Create & maintain a friendly environment that ensures involvement & commitment in all of us to aim for total quality in everything we do.
- Continuing to exercise industry leadership by establishing a shared purpose, optimizing work processes, developing people and utilizing the most current tools & technologies.



## MISSION

- To be the absolute best electrical service provider in the market we serve and to offer our customers a one-stop solution for their entire electrical power distribution needs.
- We believe in fostering positive business partnerships with our vendors and supplier community and work hard to make these relationships one of trust and mutual respect.
- In this dynamically changing business environment, we recognize the requirement for continuous improvement to meet the needs of our customers.



All icons and texts are Clickable.

We at REAL SWITCHGEARS understand the importance of both aesthetics & performance. Our goal is to become your partner & help you to reduce cost, improve lead times, reduce inventory & provide quality products. REAL SWITCHGEARS offers a variety of services:-



All icons and texts are Clickable.



# Real Switchgears & Cables Pvt. Ltd.

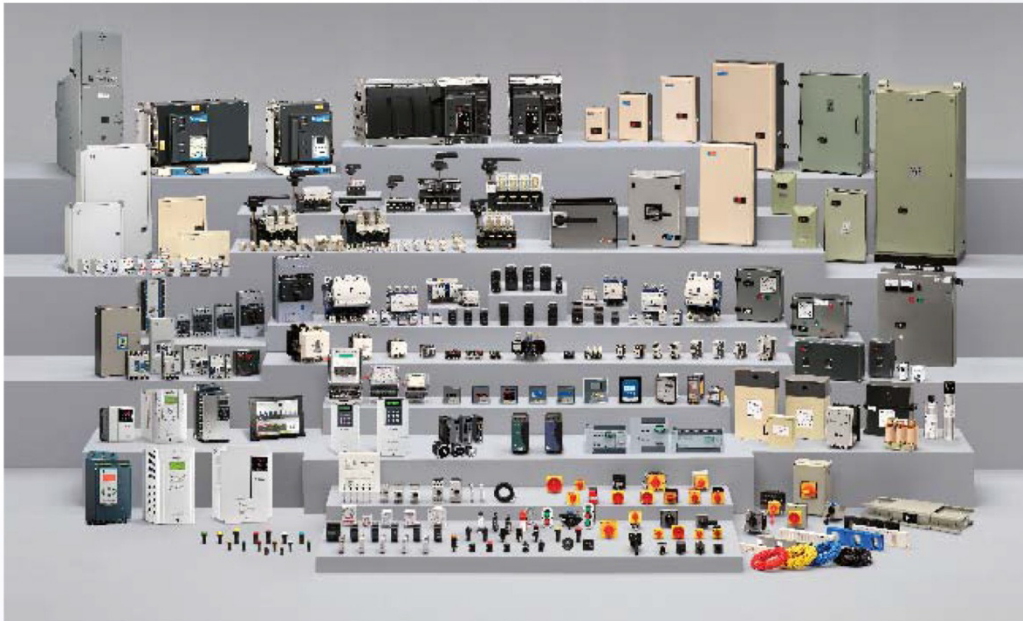
## AUTHORISED DISTRIBUTOR



 All icons and texts are Clickable.



## Low-Voltage Switchgears



Electrical & Automation (E&A) contains low and medium voltage switchgear products, electrical systems, energy meters and automation solutions.



All icons and texts are Clickable.



**REAL**

SWITCHGEARS & CABLES PVT. LTD.



020 - 27110960 / 27110930



[sales@realswitchgears.com](mailto:sales@realswitchgears.com)



[www.realswitchgears.com](http://www.realswitchgears.com)



## Wires & Cables

The wires and cables segment are power cables, control cables, instrumentation cables, solar cables, building wires, flexible cables, flexible/single multi core cables, communication cables and others including welding cables, submersible flat and round cables, rubber cables, overhead conductors, railway signaling cables, specialty cables, Copper armoured, Aluminium armoured cables and green wires.



All icons and texts are Clickable.



**REAL**

SWITCHGEARS & CABLES PVT. LTD.



020 - 27110960 / 27110930



[sales@realswitchgears.com](mailto:sales@realswitchgears.com)



[www.realswitchgears.com](http://www.realswitchgears.com)



salzer®



## Rotary and Load Break Switches, Wiring Ducts and allied products



Electrical Industry with an aim to design, develop, manufacture and supply CAM operated Rotary Switches, Selector Switches, Load Break Switches, Terminal & Foot Switches, MSP & MKG Relays, Wiring Ducts and allied products.



All icons and texts are Clickable.



**REAL**

SWITCHGEARS & CABLES PVT. LTD.



020 - 27110960 / 27110930



[sales@realswitchgears.com](mailto:sales@realswitchgears.com)



[www.realswitchgears.com](http://www.realswitchgears.com)





## Digital Timer & Monitoring Devices



The product range includes Digital Timers, Monitoring Device, Micon 175, Micon 225, Single Phase Preventer, Temperature Controller, Liquid Level Controller, SMPS, Hour Meter, On-Delay/ Off- Delay Timer, CBCT etc.



All icons and texts are Clickable.



**REAL**

SWITCHGEARS & CABLES PVT. LTD.



020 - 27110960 / 27110930



sales@realswitchgears.com



[www.realswitchgears.com](http://www.realswitchgears.com)

# EXORA



## MCB, RCCB, Isolators, Other Protection & Control Devices



It offers a complete range of products including FDP, MCB, DB, ELCB, RCCB, RCBO, Plug & Socket, SPD, TV Telephone DB, Isolators, MCB type Changeover Switch, ACCI.



These products conform to Indian and International Standards.



All icons and texts are Clickable.



### REAL

SWITCHGEARS & CABLES PVT. LTD.



020 - 27110960 / 27110930



[sales@realswitchgears.com](mailto:sales@realswitchgears.com)



[www.realswitchgears.com](http://www.realswitchgears.com)



## Tower Light & Limit Switches



Our extensive product portfolio ranges from LED Lighting Solution Signaling unit, Industrial Push Button Actuators, Tower Lights, Limit Switches, Indicators 16mm and 22.5mm and Push buttons for variety of applications.

We strongly focus on bringing tangible value to our customers through quality, service, and cost control.



All icons and texts are Clickable.



**REAL**

SWITCHGEARS & CABLES PVT. LTD.



020 - 27110960 / 27110930



sales@realswitchgears.com



[www.realswitchgears.com](http://www.realswitchgears.com)





## Lugs & Glands Accessories



In our endeavour to provide first rate cable glands. Designing of cable glands happens under management's supervision and are manufactured as per international standards. Our spectrum of cable glands are made in all sizes, specification and designs such as Single Compression type, SIBG type, Double compression type, Weatherproof and Flameproof, Aluminium Lugs and Copper Lugs, Flange type, etc.



All icons and texts are Clickable.



**REAL**

SWITCHGEARS & CABLES PVT. LTD.



020 - 27110960 / 27110930



sales@realswitchgears.com

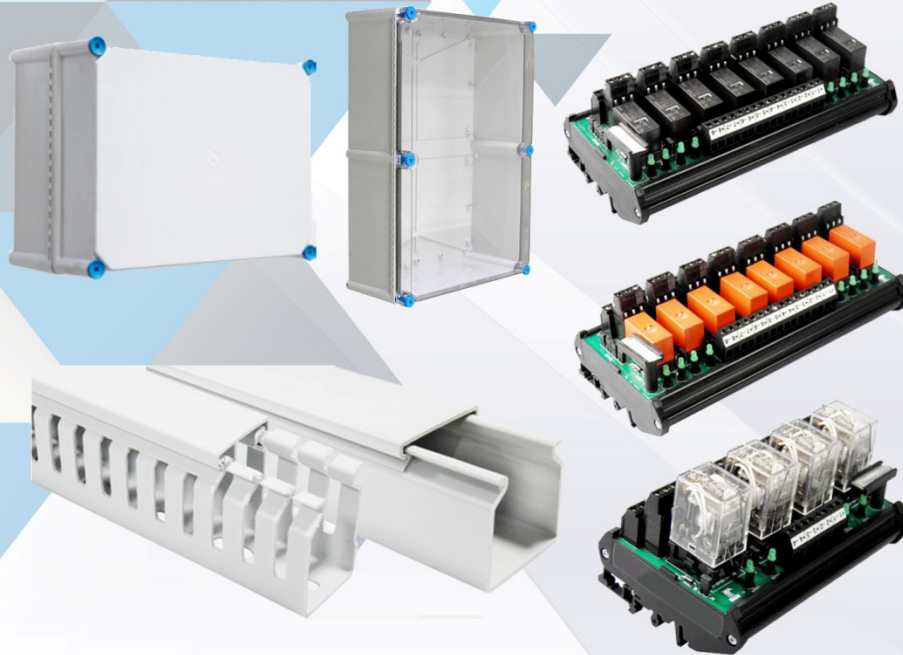


[www.realswitchgears.com](http://www.realswitchgears.com)





## Wiring Ducts, Relay Card, ABS Enclosures



Trinity Touch focuses on manufacturing various items used in control cabinet industry. Trinity Touch is one of the leading manufacturers of industrial grade ABS Enclosures, Wiring Ducts, Channels, Relay Card and DIN rails, Interface Modules to name just a few in the control cabinet industry.



All icons and texts are Clickable.



**REAL**

SWITCHGEARS & CABLES PVT. LTD.



020 - 27110960 / 27110930



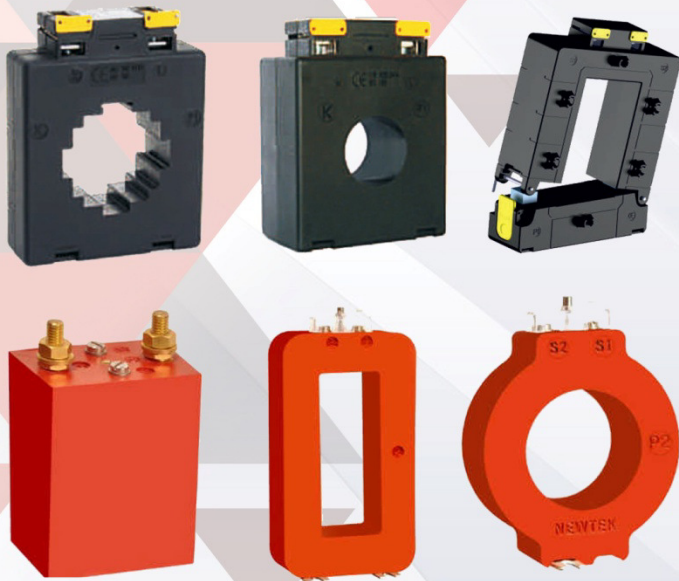
[sales@realswitchgears.com](mailto:sales@realswitchgears.com)



[www.realswitchgears.com](http://www.realswitchgears.com)



## Window Type and Split Core Current Transformers & Round, Rectangle ID, WPL



We Newtek Electricals introduce ourselves as manufacturer of instrument Transformers (CTs, PTs, COTR, MV etc.), Digital Meters (MFM, VAF, kWh, Ammeter & Voltmeter). Newtek Electricals is an ISO 9001:2015 certified. We are the first one to introduce Nylon Flame Retardant Casing Current Transformers (CTs). Our product is been used in many prestigious projects in India as well as in other countries.



All icons and texts are Clickable.



**REAL**

SWITCHGEARS & CABLES PVT. LTD.



020 - 27110960 / 27110930



sales@realswitchgears.com



[www.realswitchgears.com](http://www.realswitchgears.com)



## Flood Lights, Hi-Bay Lights, Street Lights



Oreva is one of the largest manufacturers of Lighting Products in India" facility to produce huge variety of LED Lighting Products such as Flood Lights, Hi-Bay Lights, Street Lights etc. which are available in a wide range "from 0.5 watt to 500 watt".

Subsequently, Oreva Lighting products are widely being preferred for various lighting solutions for home, office, commercial, industrial, indoor and outdoor lighting applications.



All icons and texts are Clickable.



**REAL**

SWITCHGEARS & CABLES PVT. LTD.



020 - 27110960 / 27110930



sales@realswitchgears.com



**www.realswitchgears.com**



**Catalogue and Pricelist are available.**

**Catalogue**

**Pricelist**



All icons and texts are Clickable.

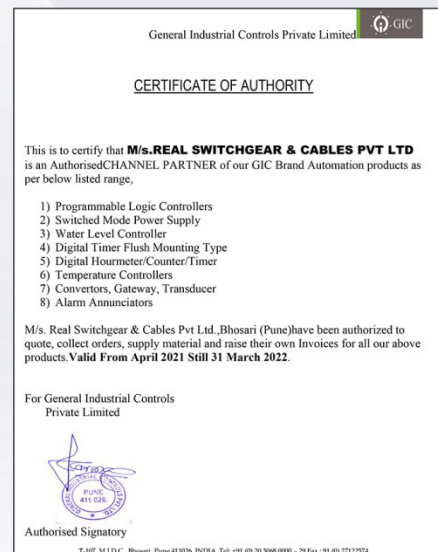


# Certificates



All icons and texts are Clickable.

# Certificates



All icons and texts are Clickable.

# Awards



L & T Achievement Award  
Year : 2011-12



L & T Achievement Award  
Year : 2015-16



L & T Achievement Award  
Year : 2017-18



L & T Achievement Award  
Year : 2018-19



Polycab Achievement Award  
Year : 2018 -19



All icons and texts are Clickable.



Shop No. 6, Plot No. BG-74A,  
Jay Tulja Bhavani Complex,  
Telco Road MIDC, Bhosari,  
Pune - 411 026. Maharashtra.



020 - 27110960 / 27110930



9766399438



[sales@realswitchgears.com](mailto:sales@realswitchgears.com)



[www.realswitchgears.com](http://www.realswitchgears.com)

# Contact Us

---



All Icons and Texts are clickable.



Thank You

